

COLFAX COBBLESTONES

May 2017

Issue 29.2

museum.colfax@gmail.com

www.colfaxhistory.org

www.facebook.com/colfaxmuseum

(530) 346-8599

The Colfax Area Historical Society (CAHS) preserves the local history of Colfax, California, the surrounding area, and the railroads, by collecting stories, photographs, and artifacts about the people and buildings in this part of the Sierra foothills. CAHS supports a local museum, makes accessible to the public historical facts and objects, cooperates with other historical societies and local groups, and marks places and buildings of historical interest in the Colfax Area.

Wells Fargo & Co. Express Building, Colfax, California



The Wells Fargo & Co. Express Building, Colfax, California, in the 1860's. From the collection of local writer and historian Pat Jones. Her collection is located in the CAHS Archives.

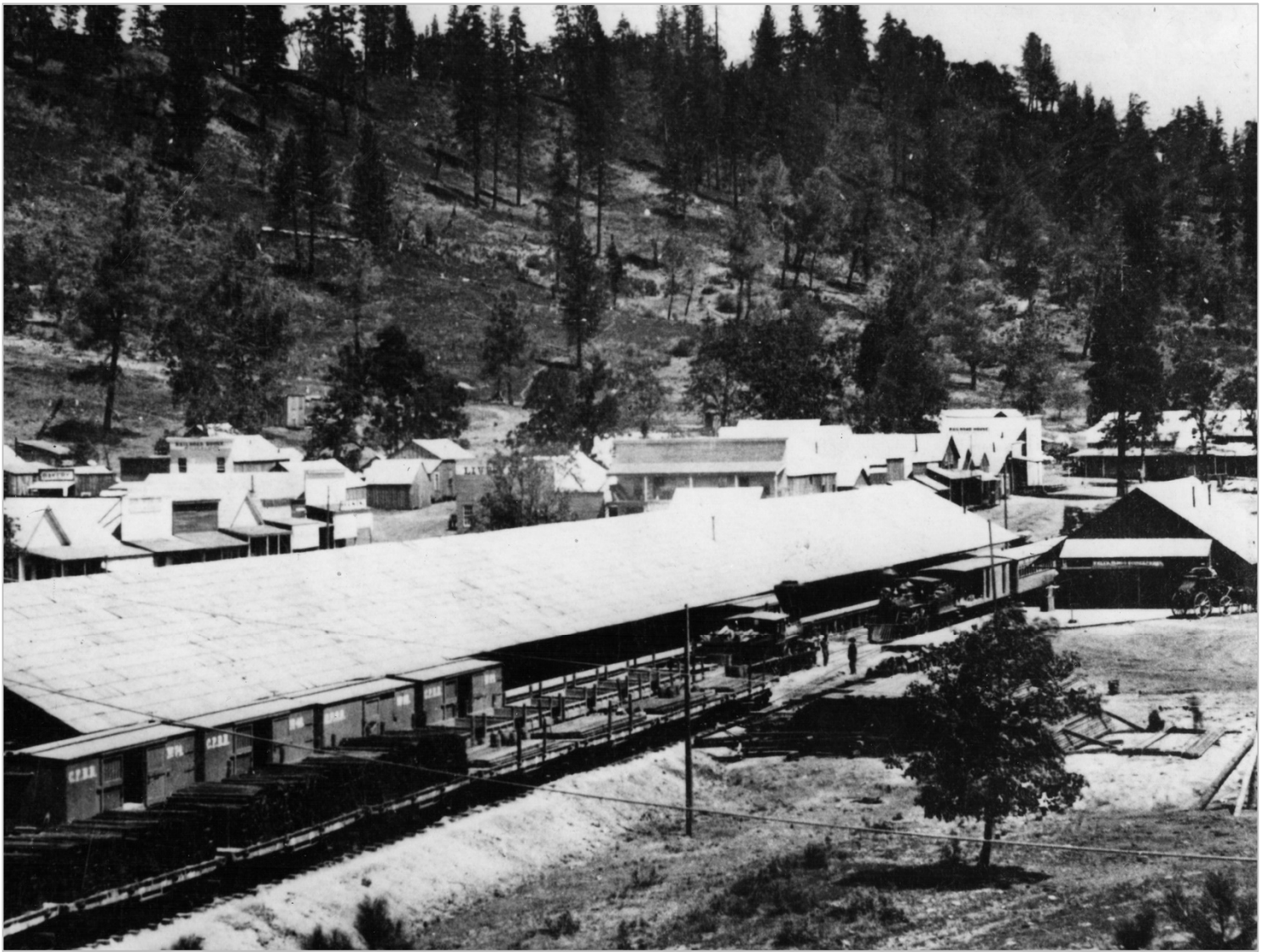
The word "Express" in the company names of both Wells Fargo Express and American Express identified them as companies who delivered letters, packages, goods, and valuables such as gold—quickly and securely. Providing express services in the 1850's was competitive and lucrative. Express services were complemented by banking services, such as selling bank drafts that were "as good as gold." In 1850, Henry

Wells and William C. Fargo, the men who would later create Wells, Fargo & Company, helped found the American Express Company. At the American Express Company, Wells served as its first president, and Fargo served as its vice-president. When the American Express Company declined to expand into the western states (including California), Wells and Fargo created Wells, Fargo & Company in 1852.

In California, neither the express nor banking industries were regulated. Wells Fargo & Company set up offices to provide banking and shipping services in communities near California gold fields, and created a network of transportation carriers and routes, sometimes using their competitors as subcontractors. Wells Fargo also became involved in carrying overland mail. As other companies were acquired, their services were then provided under the Wells Fargo name.

Storing Supplies for the Central Pacific Construction Gangs, 1865

During the time that Colfax, California, served as the railhead for the Central Pacific Railroad's construction gangs, the company had a 500-foot long freight depot in Colfax, where it stored its supplies for the railroad's construction gangs. This official Central Pacific Railroad photograph was taken in 1865.



Colfax, California, 1865. This is the Central Union Railroad freight depot where supplies were stored for the construction gangs that worked on the railroad during the time when Colfax served as the railhead, or terminus, of the railway line. Photograph by Central Pacific photographer Alfred A. Hart. From the collection of Pat Jones.

May 13th Meeting and Program about the Folsom Powerhouse

Come learn about the history of Folsom and the Folsom Powerhouse on Saturday, May 13, 2017, at 7 p.m.

Stephen Porten, a docent and tour guide at the Folsom Powerhouse State Park, will speak to us at our quarterly meeting. Stephen has been a docent for four years. He is one of 30 people who volunteer at the Powerhouse and the Powerhouse Visitor Center. He will also explain why the Folsom Prison is located where it is.

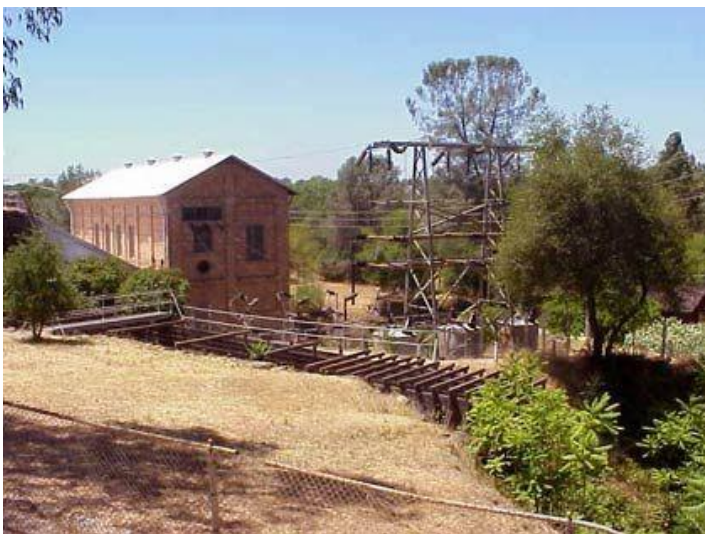
Saturday, May 13, 2017, 7 p.m.

Colfax Passenger Depot
99 Railroad Street, Colfax

There is no charge. This meeting is open to all CAHS members and to the public. Visitors and guests are welcome. Refreshments will be provided. Bring a friend!

Stephen Porten was born in Sacramento and lives in Folsom with his wife, Mary. They have been married 54 years. He retired from Pacific Bell in 1994 after 34 years. After Pacific Bell, he continued to work for other telecommunication companies until 2010.

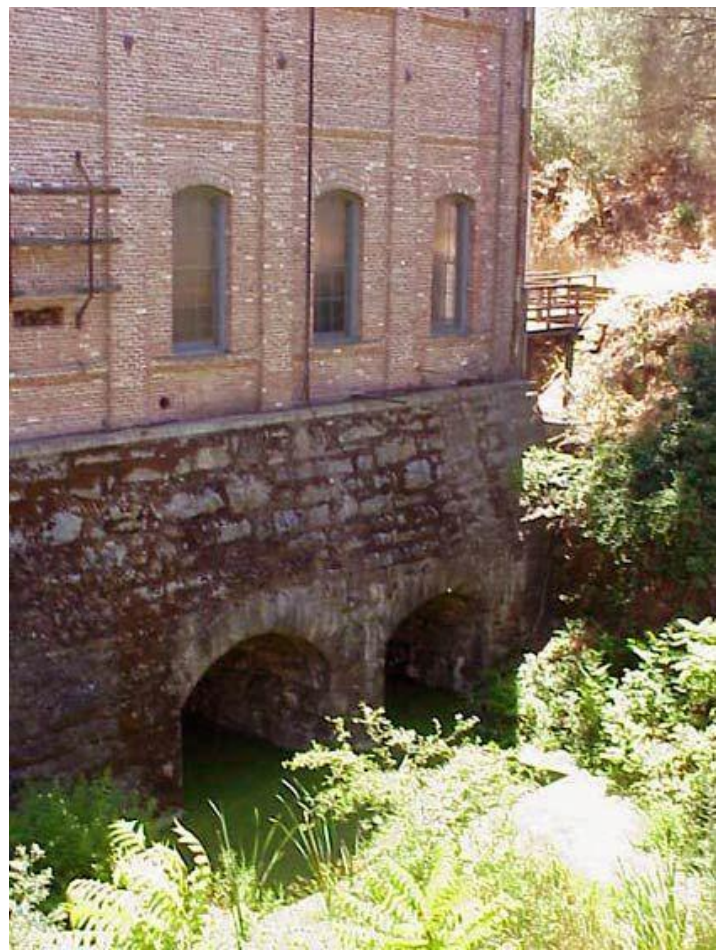
When he's not volunteering, Stephen spends his time with ham radio, photography, and working on his family ranch. He was first licensed as an Amateur Radio Operator in 1958, at the age of 16. He now holds an Extra Class license KN60X.



Electric Power from Folsom to Sacramento, 1895

"It was 4 a.m. in Sacramento when a 100 gun salute shattered the quiet. People not planning on getting up early that morning never forgot it. But it was a memorable day for other reasons, too. It was when electric power arrived in Sacramento over 22 miles of line from the new Folsom Powerhouse."

— *San Francisco Chronicle*, July 13, 1895
From the Folsom Powerhouse SHP's web site,
www.parks.ca.gov/?page_id=1335



These photographs are from the Folsom Powerhouse State Historical Park's web site, courtesy of the California State Parks, www.parks.ca.gov/?page_id=501

Chinese Laborers Working at the Secret Town Trestle, 1868



Chinese laborers working at the Secret Town, California, railroad trestle that was built by the Central Pacific Railroad, 1868. From the collection of Pat Jones.

Docents and Volunteers Are Needed at the Museum and Chamber of Commerce

Would you be interested in volunteering at the Colfax Area Heritage Museum in Colfax one day a week? The Museum needs additional docents in order to keep the museum open seven days a week.

Docents at the Museum answer local history questions, make the museum available to the public seven days a week, from 10 a.m. to 3 p.m., and greet visitors and travelers. If interested, please call the museum at (530) 346-8599 or drop in and talk to the volunteers on duty.

The Chamber of Commerce also needs volunteers to answer questions about the Colfax Area and its businesses, provide information about train and bus schedules, and help passengers enjoy their stop in Colfax. Drop in for more information about volunteering.

The Museum and the Chamber of Commerce's office are both located in the Colfax Passenger Depot, 99 Railroad St., Colfax, California.

How to Contact Us

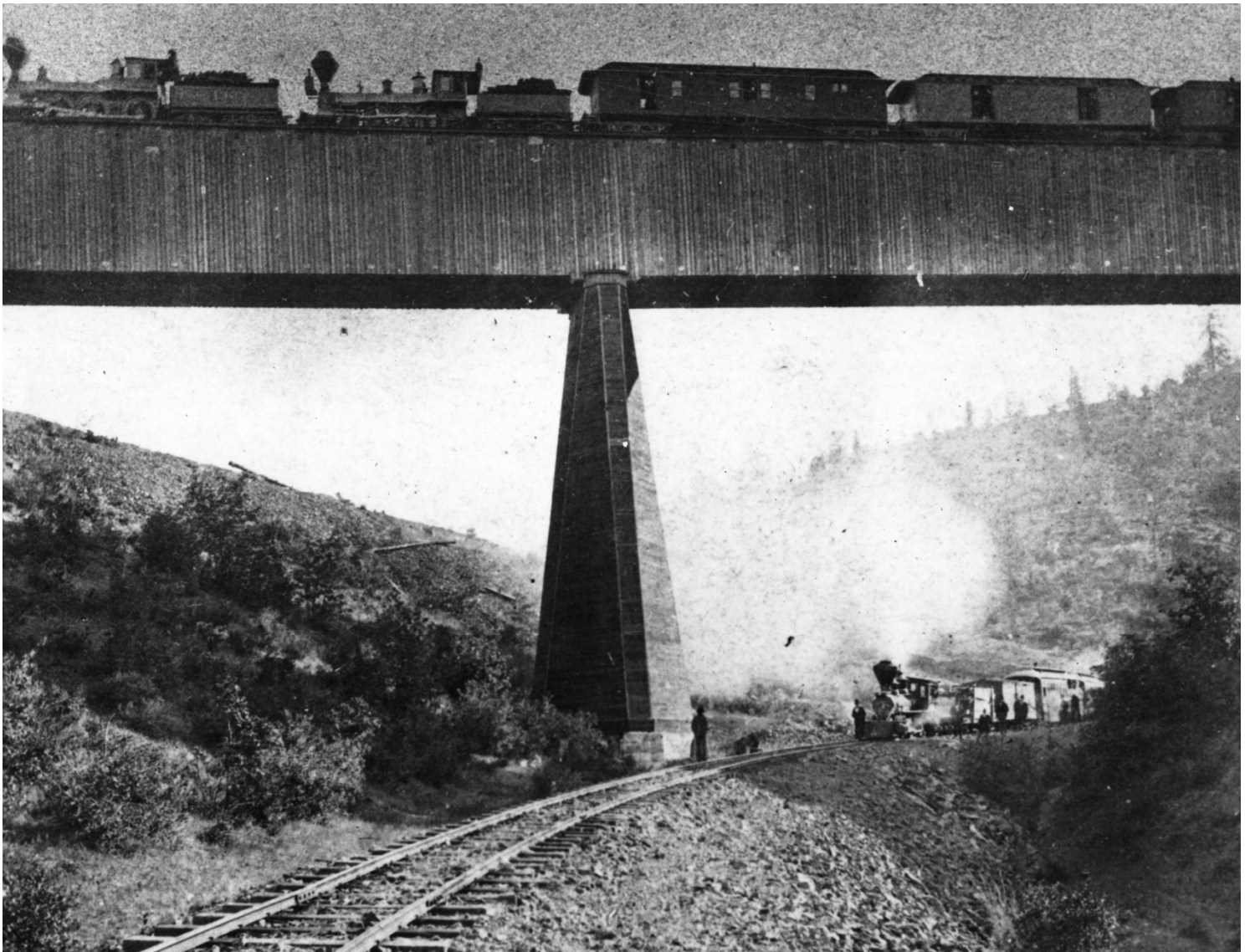
Phone: (530) 346-8599

Email: museum.colfax@gmail.com

USPS mail: Mail for both the Colfax Area Heritage Museum and the Colfax Area Historical Society is received at PO Box 185, Colfax, CA 95713

Museum location: The Colfax Area Heritage Museum is physically located at 99 Railroad St, Colfax CA 95713.

Long Ravine Bridge, near Cape Horn, California, 1875



Long Ravine Bridge, 1875. This photo is from the collection of writer and historian Pat Jones, located in the CAHS Archives.

In this photo from 1875, a Central Pacific train crosses the Long Ravine Bridge at Cape Horn, California, near Colfax. A Nevada County Narrow Gauge train passes under the 120-foot high bridge. At this point, the railroad was 56 miles from its Sacramento terminus.

The Current CAHS Officers

The officers for 2016-17 are as follows:

President: Jay MacIntyre

Vice President: Swend Miller

Treasurer: Barbara Kelly

Recording Secretary: Joann Geist

Membership Chair: Florence "Chris" Miller

Corresponding Secretary: Lynda Couchman

Archives Director: Helen Wayland

Museum Director: Florence "Chris" Miller

Cobblestones Editors: Dirk Gifford, Mel Couchman

Webmaster: Dirk Gifford

Member-At-Large: Bonnie Wilson

Member-At-Large: Walt Wilson

Member-At-Large: Gayle McClain

Local Businesses and Organizations That Support CAHS

The following local businesses and organizations are members of the Colfax Area Historical Society (CAHS).

Their membership and contributions help further the work of the CAHS and the Colfax Area Heritage Museum. We appreciate their support.

We ask you to support them and other local organizations and businesses.

CAHS works with the Colfax Area Chamber of Commerce to promote interest and support in the Colfax area. The Chamber of Commerce has been serving Colfax, Dutch Flat, Alta, and Gold run since 1951.

The Colfax Area Heritage Museum and the Colfax Area Chamber of Commerce are both located in the Colfax Passenger Depot, located in the former Colfax Amtrak passenger depot at 99 Railroad St., Colfax, CA.

American Legion Colfax Post 192 P.O. Box 311 Colfax, CA 95713	Café Luna 38 North Main Street Colfax, CA 95713 (530) 346-8833	Colfax Dental Center 120 Whitcomb Avenue Colfax, CA 95713 (530) 346-6244
Colfax Elementary School District 24825 Ben Taylor Road Colfax, CA 95713 (530) 346-2202	Colfax Farm & Country Store 140 North Main Street Colfax, CA 95713 (530) 346-2600	Colfax Garden Club P.O. Box 1801 Colfax, CA 95713 (530) 346-6215
Colfax Market 2 North Main Street Colfax CA 95713 (530) 346-7029	Colfax Record PO Box 755 Colfax, CA 95713 (530) 346-2232	Colfax Theater 2 North Main Street Colfax, CA 95713 (530) 346-7029
Grace Hubley Foundation 24820 Ben Taylor Colfax, CA 95713 www.gracehubleyfoundation.org	Hills Flat Lumber 1000 South Canyon Way Colfax, CA 95713 (530) 346-8685	Kurtis H. Fox, M.D., Inc. 101 Grass Valley St. Colfax, CA 95713 (530) 346-2281
Mar-Val Sierra Market 575 South Auburn Street Colfax, CA 95713 (530) 346-8338	Pick-A-Flick Video & Gift Shop 6 North Main Street Colfax, Ca 95713 (530) 346-8808	Sierra Business Services 520 South Auburn St, #D Colfax, CA 95713 (530) 346-2455 barbkelly@foothill.net
Sierra Vista Community Center 55 School Street Colfax, CA 95713 (530) 346-8726 svcc@colfaxnet.org	Teri Andrews-Murch, Realtor Lyon Real Estate 1900 Grass Valley Hwy, Auburn CA (530) 798-0215 www.FoothillsHotProperties.com	VFW Ladies Auxiliary Post 2003 P.O. Box 1213 Colfax, CA 95713 President: (530) 636-4242

Join the Colfax Area Historical Society

We invite you to join the CAHS and support the work of the Society. You will also receive the *Colfax Cobbblestones* four times a year by mail.

Each issue includes articles and photos about local history, CAHS news, reports about presentations at membership meetings, and news of upcoming meetings.

Memberships are for one year, from July – June. Memberships begin on July 1. However, if you join CAHS between October 1 and March 31, your membership will be prorated as explained on the form.

CAHS is on Facebook

The CAHS has a Facebook page: “Colfax Area Historical Society.”

Our Facebook username is @colfaxmuseum

You can visit our Facebook page at www.facebook.com/colfaxmuseum

Photos, Articles, Stories?

Would you like to write about one of the area’s towns, organizations, or the history of the railroad in the Colfax area? Do you have historical photos that you would like to share? If you do, please contact Dirk Gifford at dirkgifford@gmail.com or at (925) 783-9664.

Visit the CAHS Archives by Appointment

The Archives Room is open to the public by appointment, each Tuesday from 9 a.m.–12 noon. To schedule an appointment, please call the Colfax Area Heritage Museum before your visit, at (530) 346-8599.

The archives include historical objects, books and reference materials, and photographs, including:

- Chinese ceramics and baskets
- Period clothing from 1800 to 1940
- WWII memorabilia
- Books and other historical reference literature
- Cemetery records from 1851 to 1984
- Grace Hubley Jones Photographic Collection: 10,000 glass plate negatives from the early 1900's

To join the Colfax Area Historical Society, fill out this form and mail it with a check to: **CAHS, PO Box 185, Colfax, CA 95713.**

Your subscription will begin with the next quarterly issue.

Name _____

Address _____

Address _____

City _____ State _____ ZIP _____

☐ **\$20 Individual membership** (one person)

If you join between Oct. 1–Dec. 31, prorated membership is \$15

If you join between Jan. 1–Mar. 31, prorated membership is \$10

If you join April 1–June 30, membership is \$20 and will begin July 1

☐ **\$25 Family membership** (including children)

If you join between Oct. 1–Dec. 31, prorated membership is \$19

If you join between Jan. 1–Mar. 31, prorated membership is \$13

If you join April 1–June 30, membership is \$25 and will begin July 1

☐ **\$35 Business or Non-Profit Organization**
(includes an ad in each issue of *Colfax Cobbblestones*)

If you join between Oct. 1–Dec. 31, prorated membership is \$27

If you join between Jan. 1–Mar. 31, prorated membership is \$18

If you join April 1– June 30, membership is \$35 and will begin July 1

- Maps & pictures of the Colfax area and of many of the railroads, from 1870 to 1999

The Archives Room is located at 55 School Street, Colfax, in the Sierra Vista Community Center.

Recently Received Donations

Several generous donations to the CAHS were recently received from the following people:

- Carol Maples
- Donna Gandour, who made a donation in memory of Ed Duffek
- Nelda Duffek, who also made a donation in memory of Ed Duffek

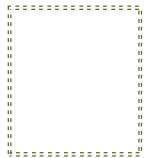
Thank you, Carol, Donna, and Nelda.

Russell Livery Stable

The W. H. Russell Livery Stable, shown in the background of this photo, was located on Main Street, Colfax, California, at the site of the current City Hall building. The date of this photo is unknown.

The Russell Livery Stable was replaced by a Memorial Hall in honor of World War I veterans. The Memorial Hall was built by Colfax Post 192 of the American Legion. The cornerstone was laid on April 23, 1927.

On June 26, 1928, the Memorial Hall building became jointly owned by Placer County and the City of Colfax, which used the new building as the City Hall and a County Court. Although the court was moved later, the building is still used as City Hall.



The Colfax Area Historical Society

PO Box 185

Colfax CA 95713